

# NEMOS LP+

## GSM DATALOGGER



3-year warranty

### ZEUS 6 PLATFORM

The solution is complemented by the free online monitoring platform ZeusWeb and mobile applications for iOS and Android.



The NEMOS LP+ is a battery powered data acquisition device with GSM communication. It is specifically designed for operation in locations without access to the electrical grid and offers eight digital inputs, suitable for flow meters, four analog inputs, and a MODBUS RTU interface, providing a comprehensive solution for remote monitoring.

The NEMOS LP+ incorporates the latest narrowband communication technologies, NB-IoT and CAT.M1, while maintaining the 2G standard. This allows the device to communicate with the most prevalent networks currently available (2G) and be ready for the future development of NB-IoT/CAT.M1.

Three power options are available: alkaline batteries, lithium batteries, or a 12V power supply. The last option is ideal for solar-powered solutions, offering flexibility and sustainability.

Its robust and versatile design makes it particularly suitable for monitoring tanks, hydrants, and similar systems where there is no electrical connection, but a wide range of inputs is required.

### FEATURES

- 8 digital inputs.
- 4 analog inputs: 0-10 VDC or 4/20 mA mode.
- Modbus RTU interface
- 4 voltage outputs in the range of 5 to 24 VDC for powering analog sensors..
- IP67 protection
- 3-year warranty.

### APPLICATIONS

- Tank monitoring
- Monitoring of hydrants and irrigation systems.
- Technified agriculture.
- Agricultural holdings.

### BATTERY SUPPLY ALTERNATIVES

Models	Supported networks	Region	Power supply
Nemos NLP+.W2G-NB.L	2G/NB-IoT/LTE-M	Worldwide	Lithium pack 7.2v / 28AH
Nemos NLP+.W2G-NB.A	2G/NB-IoT/LTE-M	Worldwide	Alkaline battery pack 6v / 10AH
Nemos NLP+.W2G-NB.E	2G/NB-IoT/LTE-M	Worldwide	No battery. External power supply

### TECHNICAL SPECIFICATIONS

#### GENERAL

Battery capacity ..... Lithium battery pack 7.2V / 28Ah  
 ..... Alkaline battery pack 6V / 10Ah  
 IP rating ..... IP67  
 Operating temperature ..... -20 °C to +75 °C  
 Radio modem ..... 2G/NB-IoT/LTE-M  
 Internal memory ..... > 150.000 logs  
 Antenna ..... Half-lambda dipole (detachable)  
 Real-time clock ..... High precision NTP synchronization  
 Configuration and diagnosis ..... USB Type B Port

#### DIGITAL INPUTS

Number ..... 8  
 Sampling Frequency ..... 64 Hz / 256 Hz

#### ANALOG INPUTS

Number ..... 4  
 Type ..... 0-10 V or 4/20 mA  
 Accuracy ..... 0,1 %  
 Resolution ..... 16 bits  
 Impedance ..... Voltage mode 2 MΩ  
 ..... Current loop mode 125 Ω

#### VOLTAGE POWER OUTPUTS

Number ..... 4  
 Type ..... 5 to 24 VDC  
 Max. output POWER ..... 1 Watt  
 Accuracy ..... 5 %

#### FIELD BUS / EXT. POWER SUPPLY

BUS Type ..... MODBUS RTU / RS-485  
 Input voltage range ..... 4 to 15 VDC

### ACCESSORIES



#### STDV01 / STDV02

Ambient temperature / temperature and humidity sensors



#### THOR-2

Module for driving two Latch type solenoids. 12 VDC / 2-wire



#### ANTENNAS

Antennas with different gains and extension cables..



#### VEGAPULS C11 / C21 / C22

Radar sensor for measuring the level of liquids and bulk solids.



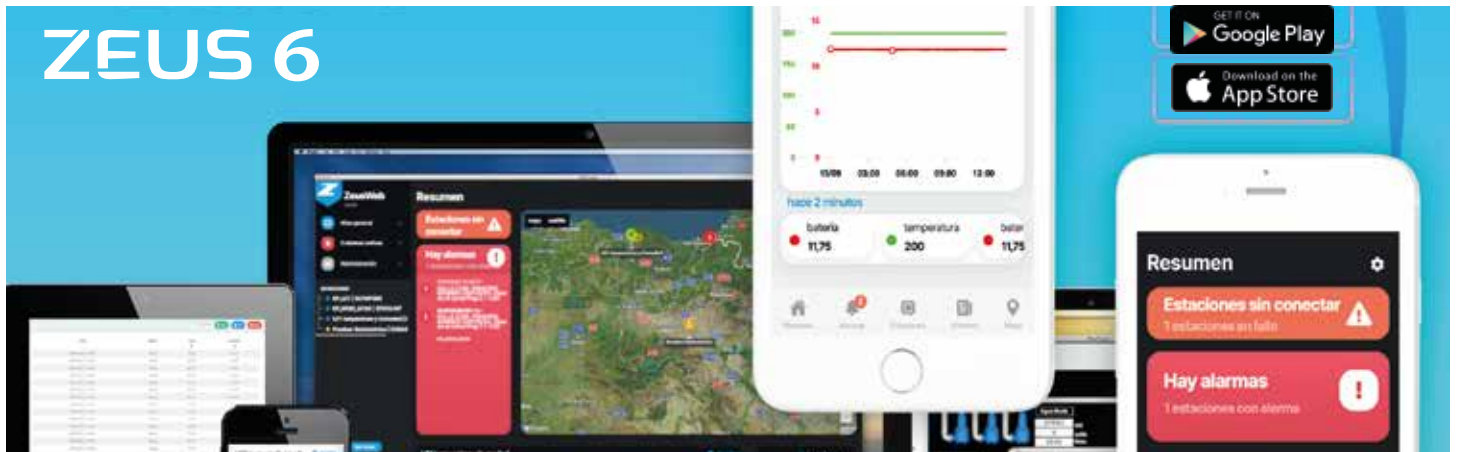
#### Y200-LP SENSOR

Ultrasonic sensor for the measurement of water level without contact.



#### HLM-255 PROBE

Submersible hydrostatic sensor to measure the level of non-aggressive liquids in pressureless tanks, wells, etc.



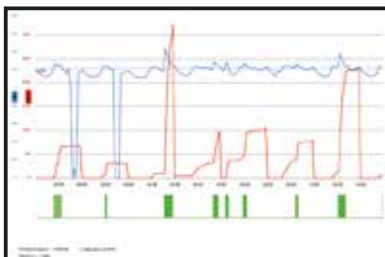
Ease of use and the implementation of the latest web technologies are the most outstanding features of ZEUS, the online SCADA system that Microcom offers its clients free of charge. With an intuitive and secure interface comparable to online banking services, ZEUS allows users to manage their facilities through a simple web browser from anywhere.

For those working remotely, the ZEUSmobile app, available for iOS and Android, provides optimized access for phones and tablets, as well as receiving alerts via push notifications, replacing traditional SMS in most cases.

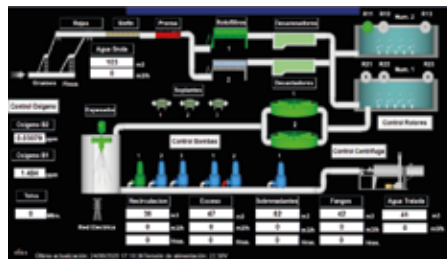
ZEUS not only allows for the visualization but also the reconfiguration of remote stations, the sending of commands, and the management of users and stations, all without requiring on-site visits. Furthermore, its integration with other platforms is guaranteed thanks to common standards such as OPC UA and REST APIs.

## TOOLS AND FEATURES

### Visualization of historical data in graphical format



### Real-time monitoring using synoptic displays



### Geolocated map of stations



Display example in:  
**ZEUS mobile**



Complete reporting tool



Receiving, managing and forwarding alarms



Maximum security thanks to the most advanced web standards: HTTPS / SSL



Remote device configuration  
Hermes and Nemos



Advanced user and privilege management



Availability of the Zeus Synoptic Builder tool for creating synoptics.



Easy data integration with other platforms via OPC UA and REST API